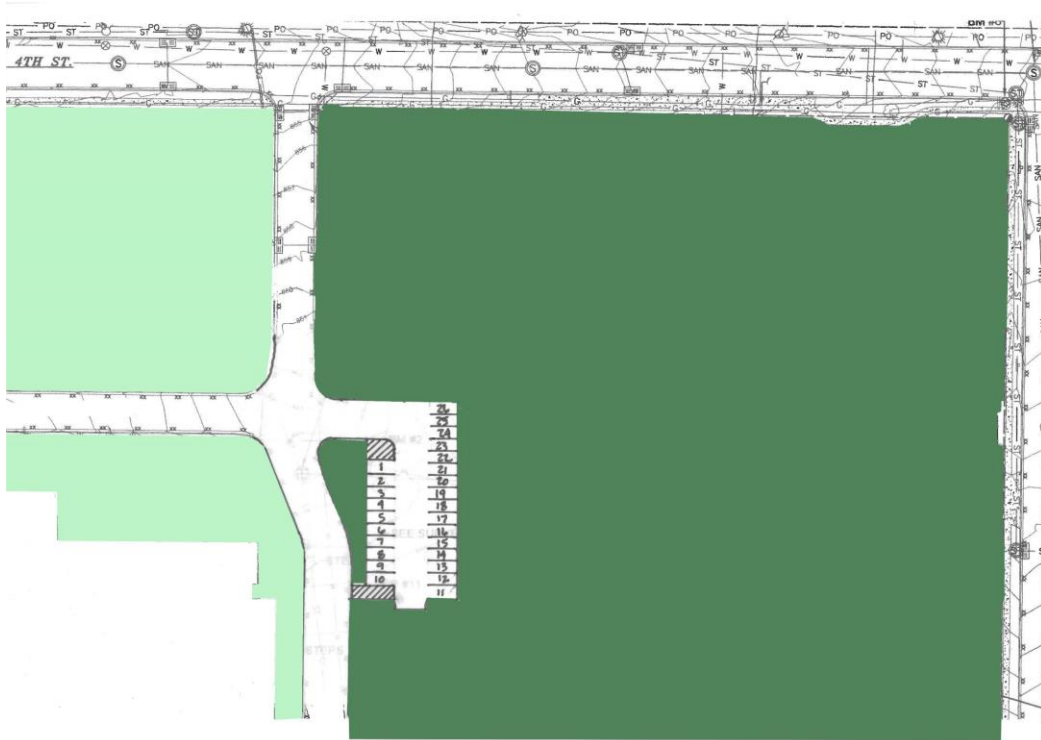


Construction Weekly Update

Week of September 8, 2019

School District of Manawa



Vacant building site restored; parking layout with additional green space.

Update

The vacant building has been fully deconstructed over the spring and summer of 2019. This site will now be converted into additional green space for the district as well as staff/overflow parking. This project will be completed summer of 2020.

About Hoffman

Hoffman Planning, Design & Construction, Inc. is an integrated Total Project Management firm based in Appleton, Wisconsin. We partner with our clients to create innovative designs and build high quality, functional, attractive, energy efficient facilities at costs at or below projects delivered using traditional design and construction methods. Currently in our fifth generation of leadership, Hoffman continues to deliver the same expert service and superior value our clients have come to appreciate.